

Features

Mounted directly on the actuator or can be used with a Namur solenoid valve and/or positioner. **Namur Speed Control** can be used with spring return or double acting actuators. Accurately adjusts the speed of the actuator for precise control of the open/close speed for the valve.



ASC-DA (5/2)



ASC-SR (3/2)

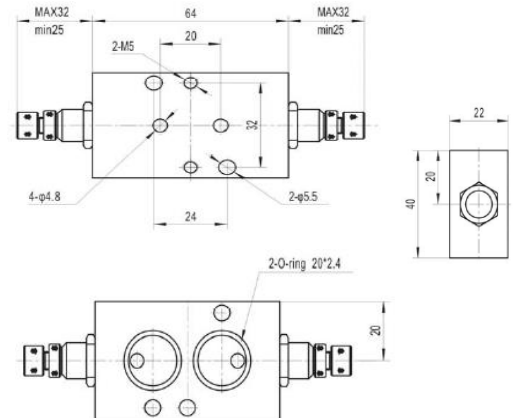
Ordering Code

ASC	DA
ASC: Speed Control Valve	DA: Working Type
	DA: Namur Speed Control for Double Acting (5/2)
	SR: Namur Speed Control for Spring Return (3/2)

Technical Data

Technical Data	
Material	Anodized aluminum body, brass, NBR seals
Assembly Connection	24×32 Namur
Maximum Orifice	3.74mm
Working Temperature	-20c~+80C
Working Pressure	1.5~10 bar
Working Media	40 micron filtered and dried compressed air
Adjustment	Brass knurled knob with lock nut
Environment	Type 4, 4X (indoor and outdoor)
Working Type	Double Acting (5/2) (ASC-DA) Spring Return (3/2) (ASC-SR)

Overall Dimension



Mounting

Important hint: Armed with the speed controller, the opening and closing speed of the actuator can be adjusted separately or simultaneity by two speed control knobs conveniently located on both ends. The orifice range can be adjusted from $\Phi 0^{\circ}$ to $\Phi 0.15^{\circ}$ / $\Phi 0$ mm to $\Phi 3.74$ mm.

