

◆ Forged Stainless Steel Pipe Fittings 2000#,3000#,6000#,9000#



45° SW/Threaded Elbow

1/8"-DN6	1 1/4"-DN32
1/4"-DN8	1 1/2"-DN40
3/8"-DN10	2"-DN50
1/2"-DN15	2 1/2"-DN65
3/4"-DN20	3"-DN80
1"-DN25	4"DN100



90° SW/Threaded Elbow

1/8"-DN6	1 1/4"-DN32
1/4"-DN8	1 1/2"-DN40
3/8"-DN10	2"-DN50
1/2"-DN15	2 1/2"-DN65
3/4"-DN20	3"-DN80
1"-DN25	4"DN100



SW/Threaded TEE

1/8"-DN6	1 1/4"-DN32
1/4"-DN8	1 1/2"-DN40
3/8"-DN10	2"-DN50
1/2"-DN15	2 1/2"-DN65
3/4"-DN20	3"-DN80
1"-DN25	4"DN100



SW/Threaded CROSS

1/8"-DN6	1 1/4"-DN32
1/4"-DN8	1 1/2"-DN40
3/8"-DN10	2"-DN50
1/2"-DN15	2 1/2"-DN65
3/4"-DN20	3"-DN80
1"-DN25	4"DN100



SW/Threaded Union

1/8"-DN6	1 1/4"-DN32
1/4"-DN8	1 1/2"-DN40
3/8"-DN10	2"-DN50
1/2"-DN15	2 1/2"-DN65
3/4"-DN20	3"-DN80
1"-DN25	4"DN100



SW/Threaded Insert

1/8"-DN6	1 1/4"-DN32
1/4"-DN8	1 1/2"-DN40
3/8"-DN10	2"-DN50
1/2"-DN15	2 1/2"-DN65
3/4"-DN20	3"-DN80
1"-DN25	4"DN100



SW/Threaded Half Coupling

1/8"-DN6	1 1/4"-DN32
1/4"-DN8	1 1/2"-DN40
3/8"-DN10	2"-DN50
1/2"-DN15	2 1/2"-DN65
3/4"-DN20	3"-DN80
1"-DN25	4"DN100



SW/Threaded Full Coupling

1/8"-DN6	1 1/4"-DN32
1/4"-DN8	1 1/2"-DN40
3/8"-DN10	2"-DN50
1/2"-DN15	2 1/2"-DN65
3/4"-DN20	3"-DN80
1"-DN25	4"DN100



SW/Threaded Reducing Coupling

1/8"-DN6	1 1/4"-DN32
1/4"-DN8	1 1/2"-DN40
3/8"-DN10	2"-DN50
1/2"-DN15	2 1/2"-DN65
3/4"-DN20	3"-DN80
1"-DN25	4"DN100



Swage Nipple

1/8"-DN6	1 1/4"-DN32
1/4"-DN8	1 1/2"-DN40
3/8"-DN10	2"-DN50
1/2"-DN15	2 1/2"-DN65
3/4"-DN20	3"-DN80
1"-DN25	4"DN100



Barrel Nipple

1/8"-DN6	1 1/4"-DN32
1/4"-DN8	1 1/2"-DN40
3/8"-DN10	2"-DN50
1/2"-DN15	2 1/2"-DN65
3/4"-DN20	3"-DN80
1"-DN25	4"DN100



TOE Nipple

1/8"-DN6	1 1/4"-DN32
1/4"-DN8	1 1/2"-DN40
3/8"-DN10	2"-DN50
1/2"-DN15	2 1/2"-DN65
3/4"-DN20	3"-DN80
1"-DN25	4"DN100



Hex Nipple

1/8"-DN6	1 1/4"-DN32
1/4"-DN8	1 1/2"-DN40
3/8"-DN10	2"-DN50
1/2"-DN15	2 1/2"-DN65
3/4"-DN20	3"-DN80
1"-DN25	4"DN100



Hose Nipple

1/8"-DN6	1 1/4"-DN32
1/4"-DN8	1 1/2"-DN40
3/8"-DN10	2"-DN50
1/2"-DN15	2 1/2"-DN65
3/4"-DN20	3"-DN80
1"-DN25	4"DN100



Threaded Elbow

1/8"-DN6	1 1/4"-DN32
1/4"-DN8	1 1/2"-DN40
3/8"-DN10	2"-DN50
1/2"-DN15	2 1/2"-DN65
3/4"-DN20	3"-DN80
1"-DN25	4"DN100



Hex Bushing

1/8"-DN6	1 1/4"-DN32
1/4"-DN8	1 1/2"-DN40
3/8"-DN10	2"-DN50
1/2"-DN15	2 1/2"-DN65
3/4"-DN20	3"-DN80
1"-DN25	4"DN100



Square Head Plug

1/8"-DN6	1 1/4"-DN32
1/4"-DN8	1 1/2"-DN40
3/8"-DN10	2"-DN50
1/2"-DN15	2 1/2"-DN65
3/4"-DN20	3"-DN80
1"-DN25	4"DN100



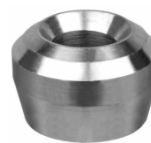
Round Head Plug

1/8"-DN6	1 1/4"-DN32
1/4"-DN8	1 1/2"-DN40
3/8"-DN10	2"-DN50
1/2"-DN15	2 1/2"-DN65
3/4"-DN20	3"-DN80
1"-DN25	4"DN100



Hex Plug

1/8"-DN6	1 1/4"-DN32
1/4"-DN8	1 1/2"-DN40
3/8"-DN10	2"-DN50
1/2"-DN15	2 1/2"-DN65
3/4"-DN20	3"-DN80
1"-DN25	4"DN100



Outlet

1/8"-DN6	1 1/4"-DN32
1/4"-DN8	1 1/2"-DN40
3/8"-DN10	2"-DN50
1/2"-DN15	2 1/2"-DN65
3/4"-DN20	3"-DN80
1"-DN25	4"DN100



SW Cap

1/8"-DN6	1 1/4"-DN32
1/4"-DN8	1 1/2"-DN40
3/8"-DN10	2"-DN50
1/2"-DN15	2 1/2"-DN65
3/4"-DN20	3"-DN80
1"-DN25	4"DN100



Boss

1/8"-DN6	1 1/4"-DN32
1/4"-DN8	1 1/2"-DN40
3/8"-DN10	2"-DN50
1/2"-DN15	2 1/2"-DN65
3/4"-DN20	3"-DN80
1"-DN25	4"DN100