

## Ordering Code

ITS

Housing Type

Switch or Sensor Type

ITS Series:  
Limit Switch Box

**Housing Type:**  
1: Aluminum IP67  
3: Aluminum IP67, Exd II BT6/CT6  
5: SS316 Housing

**Switch/Sensor Type:**  
00: Mechanical Switch 2\*SPDT  
01: Mechanical Switch 3\*SPDT  
02: Mechanical Switch 4\*SPDT  
04: Mechanical Switch 1\*DPDT  
10: Proximity Sensor PS17-5DC-L  
11: Proximity Sensor NJ2-V3-N  
12: Proximity Sensor PS17-5DNU



ITS-100



ITS-300

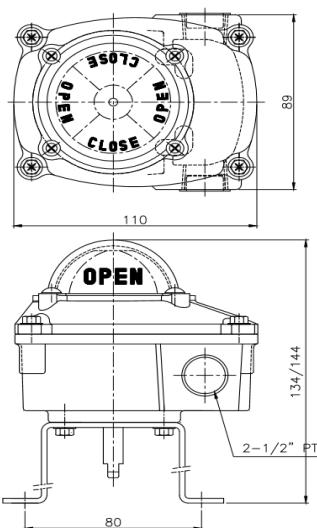
## Technical Data

Model	ITS-1XX	ITS-3XX	ITS-5XX
Material	Aluminum	Aluminum	SS316
Protection class	IP67	IP67, Exd II BT6/CT6	
Cable Entry	2-1/2NPT(PF1/2)	2-PF3/4(3/4NPT)	
Terminal strips	8 (9~12)		
Position Indicator	0~90° ( 0~180° ), Open-Yellow Close-Red		
Ambient Temp.	-20° C ~ +70° C		
Switch/Sensor	Mechanical Switch 2-SPDT	Mechanical Switch 2-SPDT, DPDT switch, Proximity Sensor	

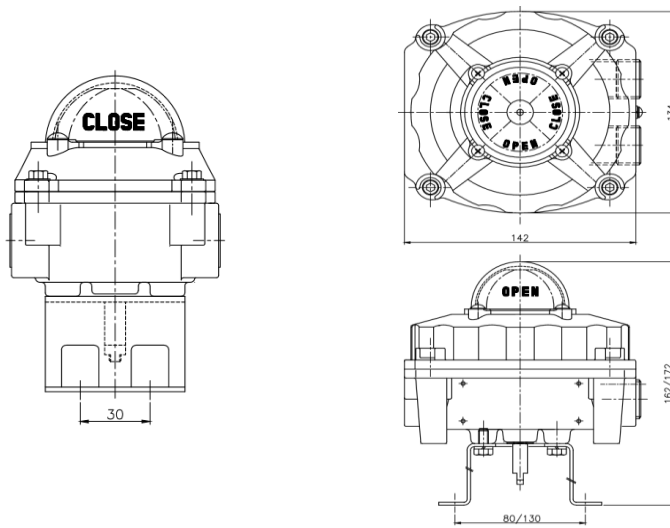
## Features

- \*Rigid and compact design
- \*Switch position indicator clearly identified
- \*Anti-off screws and bolts
- \*Dual cable entries 2\*1/2NPT, 2\*3/4PF
- \*Quick-Set Cam, spring loaded splined cam
- No need to adjust again after initial setting, Easy setting without tool.
- \*Easy Mounting Namur standard stainless steel shaft and bracket.

## Overall Dimension



ITS-100



ITS-300/500

